



## Medical Shutoff Valves with extensions





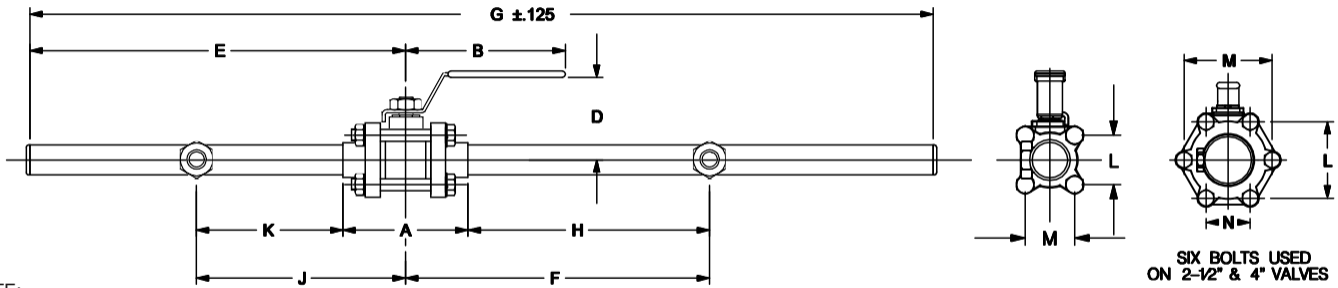
# Medical Shutoff Valves with extensions

## Valve Description:

## Valve Design:

## Features:

- Dual Gauge Port Design
- Blow out proof valve stem
- 3 Piece design for ease of maintenance
- Teflon® seats and seals
- 100% pneumatically tested
- Full port design
- Valve locking handle standard

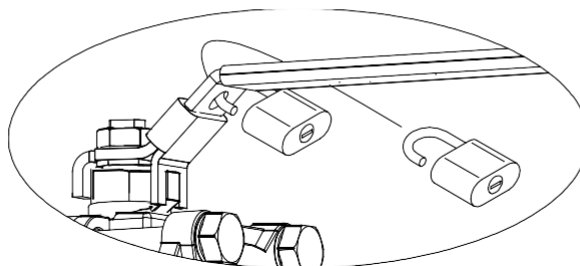


NOTE:  
 1. BRAZING MATERIAL ALLOY Bag34  
 2. ALL DIMENSIONS ARE FOR REFERENCE

## Dimensions: (inches)

Valve Size	Part Number	A	B	D	E	F	G	H	J	K	L	M	N
1/2"	41050-01	2.62	3.35	1.69	7.87	6.37	21.00	5.06	2.38	1.07	1.29	1.29	-
3/4"	41075-01	2.93	4.33	1.89	8.25	6.06	21.00	4.60	2.69	1.23	1.43	1.43	-
1"	41100-01	3.44	4.33	2.05	8.58	5.87	21.00	4.15	2.88	1.16	1.62	1.62	-
1-1/4"	41125-01	3.96	5.12	2.56	8.75	5.50	21.00	3.52	3.25	1.27	2.00	2.00	-
1-1/2"	41150-01	4.43	5.12	2.72	8.87	5.37	21.00	3.16	3.38	1.17	2.25	2.25	-
2"	41200-01	5.55	6.30	3.15	10.87	5.00	21.00	2.23	3.75	.98	2.80	2.80	-
2-1/2"	41250-01	6.73	9.06	4.29	16.00	4.25	32.00	0.89	4.25	.89	4.33	5.00	2.50
3"	41300-01	7.56	9.06	4.61	16.00	4.50	32.00	0.72	4.50	.72	4.75	5.50	2.75
4"	41400-01	9.80	11.73	7.90	16.00	7.90	32.00	3.00	7.90	3.00	6.38	7.45	3.73

NOTE: TYPICAL DIMENSIONS ONLY. NOT TO BE USED FOR CONSTRUCTION WITHOUT CONSULTING FACTORY. SUBJECT TO CHANGE WITHOUT NOTICE.



Valve Locking Handle shown

## Valve Locking Handle

Valve Size	Part Number
1/2"	41050-03
3/4"	41075-03
1"	41100-03
1 1/4"	41125-03
1 1/2"	41150-03
2"	41200-03
2 1/2"	41250-03
3"	41300-03
4"	41400-03







## Medical Check Valves with extensions





## Medical Check Valves with extensions

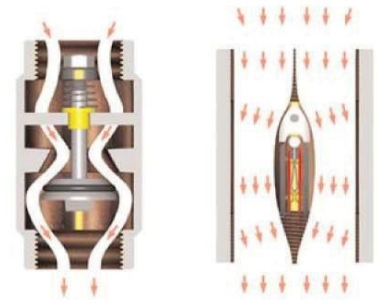
### Valve Design:

Valves are designed for working pressures of up to 300 psig. The body is field removable for servicing without cutting or disassembling of lines. All valves are supplied clean and prepared for oxygen service as per CGA G-4.1. Valves are capped and packaged in a polyethylene bag to keep them clean. Valves are provided with type-K copper tube extensions for connections on the pipeline.

### Features:

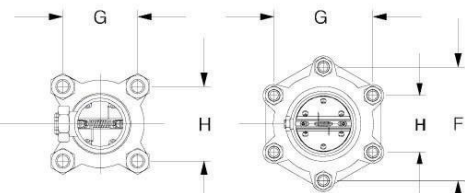
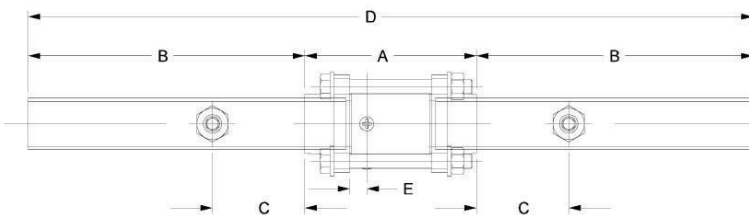
- K Copper Extensions
- Dual Gauge Port Design
- 3-Piece design for ease of maintenance
- Viton/EPDM
- 100% hydrostatically tested
- Valve port larger than copper tube flow area
- Highest CV possible

### Valve Comparison showing Low Pressure Drop design



Competitor's  
Check Valve

US Valve



FOUR BOLTS USED  
ON 3/4" THRU 2" VALVES

SIX BOLTS USED  
ON 2-1/2" & 4" VALVES

NOTE:  
BRAZING MATERIAL - ALLOY Bag34

### Dimensions: (inches)

Valve Size	Part Number	A	B	C	D	E	F	G	H
3/4"	51075-01	3.21	6.00	2.00	15.21	.33	-	1.43	1.43
1"	51100-01	3.72	6.00	2.00	15.72	.33	-	1.62	1.62
1-1/4"	51125-01	4.06	6.00	2.00	16.06	.40	-	2.00	2.00
1-1/2"	51150-01	4.45	6.00	2.00	16.45	.40	-	2.25	2.25
2"	51200-01	5.18	6.00	2.00	17.18	.40	-	2.86	2.86
2-1/2"	51250-01	6.10	6.00	2.00	18.10	.50	4.94	4.28	2.47
3"	51300-01	6.76	6.00	2.00	18.76	.50	5.51	4.77	2.75
4"	51400-01	8.56	6.00	2.00	20.56	.50	7.46	6.46	3.73

NOTE: TYPICAL DIMENSIONS ONLY. NOT TO BE USED FOR CONSTRUCTION WITHOUT CONSULTING FACTORY. SUBJECT TO CHANGE WITHOUT NOTICE.

